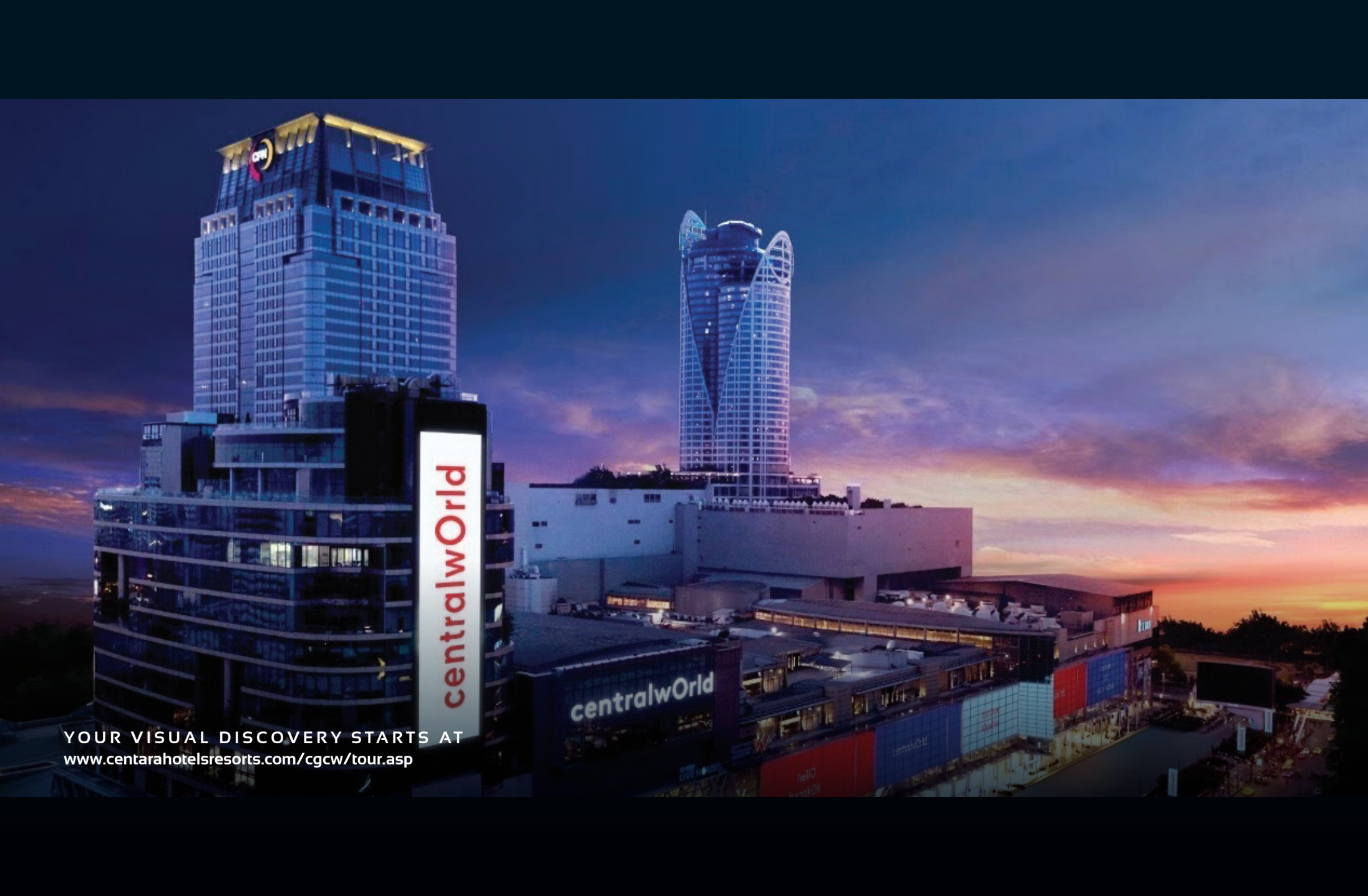


CENTARA  
GRAND  
& BANGKOK  
CONVENTION CENTRE  
AT CENTRALWORLD

BANGKOK'S PREMIER MICE VENUE



centralwOrld

centralwOrld

YOUR VISUAL DISCOVERY STARTS AT  
[www.centarahotelsresorts.com/cgcw/tour.asp](http://www.centarahotelsresorts.com/cgcw/tour.asp)

WELCOME TO THE HEART OF BANGKOK





# CENTARA GRAND

AT CENTRALWORLD

## THE TALK OF THE TOWN

Majestically soaring above the centre of Bangkok's bustling business and shopping districts at Ratchaprasong, Centara Grand at CentralWorld raises the bar for refined hospitality and dining to new heights of excellence.

Rising 235 metres (771 ft) into the sky, the 59-storey hotel was designed to resemble a flowering lotus with a theme incorporating life's four elements - earth, air, fire, and water. The conveniently located hotel provides easy all-around access to the city; Chidlom and Siam BTS Skytrain stations are connected to the hotel via skywalk, and Suvarnabhumi Airport is approximately 45 minutes away under normal traffic conditions.

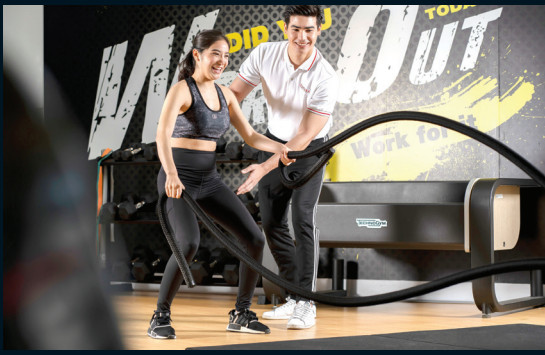
## ELEGANT ACCOMMODATIONS

Behind the hotel's meticulously crafted edifice lies a state-of-the-art, millennium-inspired uptown city-centre hotel with 505 luxury rooms, including 51 suites and 9 Executive Club floors. Beautifully furnished, each guest room features a specially designed bed, individually controlled air-conditioning, and bathroom with large bathtub and shower.

Rooms also excel on the tech side with easy-to-use control panels for lighting and other functions, along with Wifi high-speed internet, flat-screen smart TVs, in-house music, and direct international telephone dialling. All rooms offer a well-stocked minibar/refrigerator and personal in-room safety box big enough to fit a standard sized laptop.

## HOLISTIC LIVING

The Wellness Centre at Centara Grand at CentralWorld comprises Spa Cenvaree staffed by the city's top wellness practitioners, Lifestyles on 26 Fitness Studio offering daily classes, and Lifestyles on 26 Fitness Centre complete with trainers and TechnoGym equipment. Other facilities at the Wellness Centre include a Finnish sauna, infrared sauna for women & men, steam baths, steam rooms, outdoor terrace Jacuzzis, outdoor swimming pool with poolside bar and tennis courts.



## ACCOMMODATION

| Room facts at a glance |                        | In-room features |                                      |                             |                      |                             |                 |        |         |                                  |              |           |                      |                               |                 |
|------------------------|------------------------|------------------|--------------------------------------|-----------------------------|----------------------|-----------------------------|-----------------|--------|---------|----------------------------------|--------------|-----------|----------------------|-------------------------------|-----------------|
|                        |                        | Number of rooms  | Total living space (m <sup>2</sup> ) | Maximum occupancy (AD + CH) | Extra bed capability | Individual air-conditioning | Separate shower | Bathub | Minibar | Tea and coffee making facilities | In-room safe | Hairdryer | Flat-screen smart TV | Separate living / dining room | Club privileges |
| Room type              |                        |                  |                                      |                             |                      |                             |                 |        |         |                                  |              |           |                      |                               |                 |
| Superior               | Hollywood              | 60               | 32                                   | 2 AD or 1 AD + 1 CH         | -                    | •                           | •               | -      | •       | •                                | •            | •         | •                    | -                             | -               |
| Deluxe                 | King                   | 30               | 36                                   | 2 AD or 2 AD + 1 CH         | -                    | •                           | •               | •      | •       | •                                | •            | •         | •                    | -                             | -               |
|                        | Double / Double        | 120              | 36                                   | 3 AD or 2 AD + 2 CH         | •                    | •                           | •               | •      | •       | •                                | •            | •         | •                    | -                             | -               |
|                        | Hollywood              | 120              | 36                                   | 2 AD or 2 AD + 1 CH         | -                    | •                           | •               | •      | •       | •                                | •            | •         | •                    | -                             | -               |
| Family premium         | King + King            | 30               | 54                                   | 4 AD or 2 AD + 2 CH         | -                    | •                           | •               | •      | •       | •                                | •            | •         | •                    | -                             | -               |
| Club Superior          | Hollywood              | 32               | 32                                   | 2 AD or 1 AD + 1 CH         | -                    | •                           | •               | -      | •       | •                                | •            | •         | •                    | -                             | •               |
| Club Deluxe            | King                   | 28               | 39                                   | 2 AD or 2 AD + 1 CH         | -                    | •                           | •               | •      | •       | •                                | •            | •         | •                    | -                             | •               |
|                        | Double / Double        | 38               | 39                                   | 3 AD or 2 AD + 2 CH         | •                    | •                           | •               | •      | •       | •                                | •            | •         | •                    | -                             | •               |
| Junior Suite           | King                   | 14               | 54                                   | 2 AD or 2 AD + 1 CH         | -                    | •                           | •               | •      | •       | •                                | •            | •         | •                    | -                             | •               |
| Club Suite             | King                   | 30               | 67                                   | 2 AD or 2 AD + 1 CH         | -                    | •                           | •               | •      | •       | •                                | •            | •         | •                    | -                             | •               |
| Executive Suite        | King + Hollywood       | 6                | 110                                  | 4 AD or 4 AD + 1 H          | -                    | •                           | •               | •      | •       | •                                | •            | •         | •                    | -                             | •               |
| Royal Suite            | King + Double / Double | 1                | 410                                  | 4 AD + 2 CH                 | •                    | •                           | •               | •      | •       | •                                | •            | •         | •                    | •                             | •               |

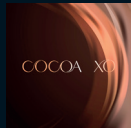


## A WORLD OF DINING

Experience a world of dining pleasures when you organise a meeting, convention, presentation or incentive party with exciting restaurants and bars at Centara Grand & Bangkok Convention Centre at CentralWorld, and enjoy creative cuisine from our team of international chefs.



Located on the 59<sup>th</sup> floor of the hotel, CRU Champagne Bar crowns Centara Grand at CentralWorld and redefines the art of drinking Champagne. The bar's name comes from the French word "CRU" denoting vineyards recognised for exceptional quality of wine grapes.



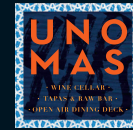
COCOA XO is the latest addition to the vast nightlife offerings of Centara Grand at CentralWorld with an emphasis on premium chocolate and cognac. Located on the 57<sup>th</sup> floor, this alfresco bar and lounge offers spectacular city views, a walk-in cocoa pod accessible through a unique chocolate grotto, and an illuminated cognac cocktail bar.



Red Sky Bar offers 360-degree skyline views of Bangkok from its rooftop location 56 stories high in the sky. Here, guests enjoy sunset in style every day of the week.



Red Sky is a chic rooftop bistro melded into a wine and martini bar offering 360-degree views of Bangkok. At the 55<sup>th</sup>-floor restaurant, diners enjoy signature dishes including a truffle-infused Wagyu Beef Tenderloin Rossini and a new take on Surf & Turf tower featuring the freshest locally sourced seafood and imported prime steaks.



UNO MAS features a menu inspired by Spanish and Mediterranean cuisines, complemented with an exceptional wine list. Its spectacular setting 54 floors up in the sky offers stunning panoramic views of the Bangkok skyline.



Ventisi delivers a casual yet elegant all-day dining experience honouring two of the world's all-time favourite cuisines. Divided with two live island kitchens, masterful chefs pay tribute to authentic Italian flavours and classic Thai cuisine using historical recipes and the finest ingredients from all corners of the Kingdom.



Dynasty offers an Asian design concept incorporating the elements of fire and water: fluid curves and combined with live cooking stations and a dim sum show kitchen. The 24<sup>th</sup>-floor restaurant also offers five glass-enclosed private rooms with impressive vistas of downtown Bangkok.



On the ground floor, Zing is a modern indoor and al fresco café serving freshly brewed coffees alongside just-baked cakes, French pastries and Asian flavoured snacks. Ideal for quick bites and takeaways, Zing also serves fresh delis, salads, fruit juices and more.

| Venue                        | Type of cuisine                                | Capacity (seats) | Opening hours | Location               |
|------------------------------|--|------------------|---------------|------------------------|
| CRU Champagne Bar at Red Sky | Rooftop Bar 360°                               | 100              | 17:00 - 01:00 | 59 <sup>th</sup> floor |
| COCOA XO                     | Bar for Chocolate and Cognac lovers            | 120              | 16:00 - 01:00 | 57 <sup>th</sup> floor |
| Red Sky Bar                  | Rooftop Bar 360°                               | 90               | 16:00 - 01:00 | 56 <sup>th</sup> floor |
| Red Sky                      | Chic urban bistro dining, wine and martini Bar | 230              | 17:00 - 01:00 | 55 <sup>th</sup> floor |
| UNO MAS                      | Spanish and Mediterranean                      | 152              | 12:00 - 23:00 | 54 <sup>th</sup> floor |
| Poolside Dining              | Wine, beer and cocktail bar                    | 60               | 10:00 - 19:00 | 26 <sup>th</sup> floor |
| Ventisi                      | International and theme dinner buffets         | 250              | 06:30 - 22:30 | 24 <sup>th</sup> floor |
| Dynasty                      | Chinese restaurant                             | 200              | 12:00 - 22:30 | 24 <sup>th</sup> floor |
| Zing                         | Coffee, juices, pastries and refreshments      | 62               | 07:00 - 19:00 | Ground floor           |





# BANGKOK CONVENTION CENTRE

AT  
CENTRALWORLD



BEST MEETING AND  
CONVENTION HOTEL  
2022

Bangkok Convention Centre at CentralWorld is the ideal venue for international and regional conventions, conferences, exhibitions, seminars, social events and concerts. Its integrated system provides state-of-the-art facilities, supported by a dedicated team of experienced staff. The convenient location, combined with the superb surroundings of shopping and entertainment options, creates the perfect environment for meetings and conventions.

The Bangkok Convention Centre at CentralWorld is the biggest convention venue in the central business district of Bangkok accommodating events from 10 to 6,000 attendees.

## CONVENTION HALL

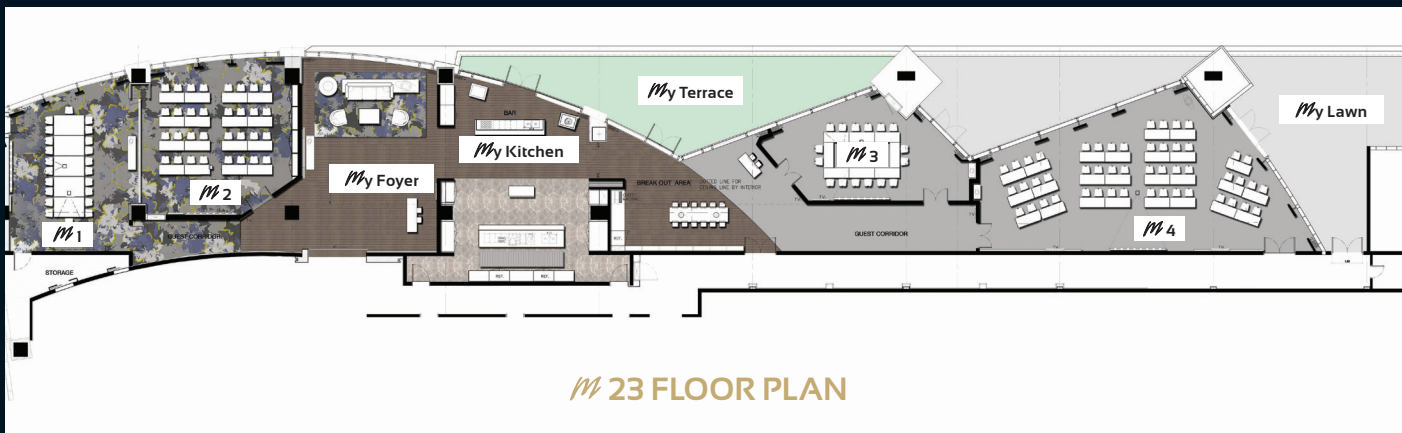
With over 5,000 seats in the pillar-less hall, the flexible design of the stage, together with professional audio-visual and lighting facilities, makes the Convention Hall an ideal place for every type of event concept. The large pre-function areas of 1,291 sqm, and an additional 385 sqm when combined with the spacious open atrium of the convention centre's lobby, can be used for various functions and activities staged against the stunning backdrop of the Bangkok skyline.

## WORLD BALLROOM

Located on the same level as the Sky Lobby, the elegant World Ballroom provides state-of-the-art facilities, soundproof wall partitions, large projection screens, and professional audio-video equipment and lighting systems. The pillar-less room with high ceilings is the ideal venue for prestigious gala dinners, cocktail parties, dazzling wedding parties or high-impact company conferences and product presentations. The spacious pre-function area measuring 706 sqm can be used for various activities and offers spectacular views of Bangkok.

## LOTUS SUITES 1 - 15 AND EXECUTIVE BOARDROOM

Lotus Suites are available in sizes ranging from 58 - 412 sqm and accommodating from 10 - 400 guests, with full audio-video equipment and natural lighting in some rooms. The spacious pre-function area measures 809 sqm and is ideal for registrations, product displays and enjoying refreshments.



Centara Grand & Bangkok Convention Centre at CentralWorld is the ultimate corporate meeting retreat in Bangkok. **M 23** comprises four dedicated state-of-the-art, natural day lit boardrooms with capacity for 18 to 50 people.

## MEETING AND EVENTS

| Venue                      | Location               | Area (m²) | Size (m x m) |   |      | Height (m) | Classroom | Theatre | Banquet | Cocktail |
|----------------------------|------------------------|-----------|--------------|---|------|------------|-----------|---------|---------|----------|
|                            |                        |           |              | x |      |            |           |         |         |          |
| Convention Centre          | 22 <sup>nd</sup> floor | 5,250     | 80.4         | x | 65.3 | 13.50      | 2,500     | 5,000   | 3,800   | 7,000    |
| Convention Centre A1       | 22 <sup>nd</sup> floor | 1,900     | 29.2         | x | 65.3 | 13.50      | 900       | 1,700   | 1,200   | 2,200    |
| Convention Centre B1       | 22 <sup>nd</sup> floor | 3,350     | 51.1         | x | 65.3 | 13.50      | 1,600     | 3,300   | 2,600   | 4,800    |
| Convention Centre A2 or B2 | 22 <sup>nd</sup> floor | 2,625     | 40.1         | x | 65.3 | 13.50      | 1,250     | 2,500   | 1,900   | 3,500    |
| Pre-Function               | 22 <sup>nd</sup> floor | 1,290     |              | - |      | 4.00       | -         | -       | -       | 1,000    |
| World Ballroom             | 23 <sup>rd</sup> floor | 960       | 44.3         | x | 21.7 | 6.80       | 580       | 1,000   | 700     | 1,200    |
| World Ballroom A / C       | 23 <sup>rd</sup> floor | 242       | 11.2         | x | 21.7 | 6.80       | 140       | 250     | 170     | 300      |
| World Ballroom B           | 23 <sup>rd</sup> floor | 476       | 22           | x | 21.7 | 6.80       | 220       | 500     | 350     | 600      |
| Pre-Function               | 23 <sup>rd</sup> floor | 706       |              | - |      | 4.00       | -         | -       | -       | 500      |
| Lotus Suite 1 - 4          | 22 <sup>nd</sup> floor | 412       | 22.5         | x | 18.4 | 4.00       | 200       | 380     | 300     | 550      |
| Lotus Suite 1 / 2 / 3 / 4  | 22 <sup>nd</sup> floor | 103       | 11.2         | x | 19.2 | 4.00       | 50        | 90      | 80      | 120      |
| Lotus Suite 5 - 7          | 22 <sup>nd</sup> floor | 412       | 22.5         | x | 18.4 | 4.00       | 200       | 380     | 300     | 550      |
| Lotus Suite 5 / 6          | 22 <sup>nd</sup> floor | 103       | 11.2         | x | 9.2  | 4.00       | 50        | 90      | 80      | 120      |
| Lotus Suite 7              | 22 <sup>nd</sup> floor | 206       | 11.3         | x | 18.5 | 4.00       | 100       | 190     | 160     | 250      |
| Lotus Suite 8              | 22 <sup>nd</sup> floor | 58        | 9.4          | x | 7.5  | 4.00       | 20        | 40      | 20      | 30       |
| Lotus Suite 9              | 22 <sup>nd</sup> floor | 80        | 9.5          | x | 9.4  | 4.00       | 40        | 70      | 70      | 100      |
| Lotus Suite 10             | 22 <sup>nd</sup> floor | 100       | 11.6         | x | 10.5 | 4.00       | 60        | 100     | 80      | 140      |
| Lotus Suite 11             | 22 <sup>nd</sup> floor | 110       | 11.3         | x | 10.7 | 4.00       | 60        | 110     | 100     | 150      |
| Lotus Suite 12             | 22 <sup>nd</sup> floor | 95        | 9.7          | x | 10.4 | 4.00       | 50        | 80      | 80      | 110      |
| Pre-Function               | 22 <sup>nd</sup> floor | 809       |              | - |      | 4.00       | -         | -       | -       | -        |
| Lotus Suite 13 / 14        | 23 <sup>rd</sup> floor | 68        | 9.5          | x | 7.2  | 4.00       | 24        | 50      | 30      | 40       |
| Lotus Suite 15             | 23 <sup>rd</sup> floor | 58        | 11.5         | x | 6.5  | 4.00       | 18        | 30      | 20      | 20       |
| Pre - Function             | 23 <sup>rd</sup> floor | 158       |              | - |      | 4.00       | -         | -       | -       | -        |
| VIP Room                   | 23 <sup>rd</sup> floor | 90        |              | - |      | 4.00       | -         | -       | -       | -        |
| Board Room                 | 23 <sup>rd</sup> floor | 104       | 14           | x | 9    | 3.90       | -         | -       | -       | -        |
| M 1 & M 2 at M 23          | 23 <sup>rd</sup> floor | 133       |              | - |      | 5.50       | 50        | 80      | 60      | 100      |
| M 1                        | 23 <sup>rd</sup> floor | 63        |              | - |      | 5.50       | 22        | 44      | -       | -        |
| M 2                        | 23 <sup>rd</sup> floor | 70        |              | - |      | 5.50       | 32        | 64      | -       | -        |
| M 3                        | 23 <sup>rd</sup> floor | 55        |              | - |      | 5.50       | 18        | 36      | -       | -        |
| M 4                        | 23 <sup>rd</sup> floor | 135       |              | - |      | 5.50       | 50        | 90      | 80      | 120      |
| M y Foyer                  | 23 <sup>rd</sup> floor | 90        |              | - |      | 5.00       | -         | -       | -       | 40       |
| M y Kitchen                | 23 <sup>rd</sup> floor | 60        |              | - |      | 3.30       | -         | -       | -       | 60       |
| M y Terrace                | 23 <sup>rd</sup> floor | 56 / 85   |              | - |      | 3.30       | -         | -       | -       | 60       |
| M y Lawn                   | 23 <sup>rd</sup> floor | 204       |              | - |      | 3.30       | -         | -       | -       | 120      |

# CONVENTION CENTRE LEVEL



|                      | W x L       | HEIGHT / M    | AREA / SQM |
|----------------------|-------------|---------------|------------|
| CONVENTION CENTRE    | 80.4 x 65.3 | 11.30 / 13.50 | 5,250      |
| CONVENTION CENTRE A1 | 29.2 x 65.3 | 11.30 / 13.50 | 1,900      |
| CONVENTION CENTRE B1 | 51.1 x 65.3 | 11.30 / 13.50 | 3,350      |
| CONVENTION CENTRE A2 | 40.1 x 65.3 | 11.30 / 13.50 | 2,625      |
| CONVENTION CENTRE B2 | 40.1 x 65.3 | 11.30 / 13.50 | 2,625      |

|                 | W x L       | HEIGHT / M  | AREA / SQM |
|-----------------|-------------|-------------|------------|
| LOTUS SUITE 1-4 | 22.5 x 18.4 | 3.80 / 4.00 | 412        |
| LOTUS SUITE 1   | 11.2 x 9.2  | 3.80 / 4.00 | 103        |
| LOTUS SUITE 2   | 11.2 x 9.2  | 3.80 / 4.00 | 103        |
| LOTUS SUITE 3   | 11.2 x 9.2  | 3.80 / 4.00 | 103        |
| LOTUS SUITE 4   | 11.2 x 9.2  | 3.80 / 4.00 | 103        |
| LOTUS SUITE 5-7 | 22.5 x 18.5 | 3.80 / 4.00 | 412        |
| LOTUS SUITE 5   | 11.2 x 9.2  | 3.80 / 4.00 | 103        |
| LOTUS SUITE 6   | 11.2 x 9.2  | 3.80 / 4.00 | 103        |
| LOTUS SUITE 7   | 11.3 x 18.5 | 3.80 / 4.00 | 206        |
| LOTUS SUITE 8   | 9.4 x 7.5   | 3.80 / 4.00 | 58         |
| LOTUS SUITE 9   | 9.5 x 9.4   | 3.80 / 4.00 | 80         |
| LOTUS SUITE 10  | 11.6 x 10.5 | 3.80 / 4.00 | 100        |
| LOTUS SUITE 11  | 11.3 x 10.7 | 3.80 / 4.00 | 110        |
| LOTUS SUITE 12  | 9.7 x 10.4  | 3.80 / 4.00 | 95         |

The total area figures in the table are rounded up

# WORLD BALLROOM LEVEL



|                  | W x L       | HEIGHT / M  | AREA / SQM |
|------------------|-------------|-------------|------------|
| WORLD BALLROOM   | 44.3 x 21.7 | 5.30 / 6.80 | 960        |
| WORLD BALLROOM A | 11.2 x 21.7 | 5.30 / 6.80 | 242        |
| WORLD BALLROOM B | 22 x 21.7   | 5.30 / 6.80 | 476        |
| WORLD BALLROOM C | 11.2 x 21.7 | 5.30 / 6.80 | 242        |
| VIP ROOM         | 15 x 6      |             | 90         |

|                | W x L      | HEIGHT / M  | AREA / SQM |
|----------------|------------|-------------|------------|
| LOTUS SUITE 13 | 9.5 x 7.2  | 3.80 / 4.00 | 68         |
| LOTUS SUITE 14 | 9.5 x 7.2  | 3.80 / 4.00 | 68         |
| LOTUS SUITE 15 | 11.5 x 6.5 | 3.80 / 4.00 | 58         |
| BOARDROOM      | 14 x 9     | 3.70 / 3.90 | 104        |

The total area figures in the table are rounded up



## LEVEL 22 - CONVENTION HALL AND LOTUS SUITE 1-12

|                          |   |
|--------------------------|---|
| Floor Area               | 5,250 m <sup>2</sup> / 80.4 x 65.3 m  |
| Foyer Area               | 1,676 m <sup>2</sup>  |
| Floor Strength           | 500 kg / m <sup>2</sup>   |
| Floor Type               | Concrete, underlay with carpet tile   |
| Ceiling Height           | 11.8 m to 13.5 m  |
| Stage Construction       | Stage size is adjustable  |
| Partition                | 1 set (soundproof)  |
| Changing Room            | 2 rooms up to 140 m <sup>2</sup>  |
| VIP Room                 | 1 room  |
| Additional Meeting Rooms | Lotus Suite 1-4, combination of 4 rooms<br>Lotus Suite 5-7, combination of 3 rooms<br>Lotus Suite 8, with natural lighting<br>Lotus Suite 9, with natural lighting<br>Lotus Suite 10, with natural lighting<br>Lotus Suite 11, with natural lighting<br>Lotus Suite 12, with natural lighting |
| Foyer Area               | 809 m <sup>2</sup>  |



## LEVEL 23 - WORLD BALLROOM, LOTUS SUITES 13-15 AND EXECUTIVE BOARDROOM

|                          |   |
|--------------------------|---|
| Floor Area               | 960 m <sup>2</sup> / 44.3 x 21.7 m  |
| Foyer Area               | 706 m <sup>2</sup>  |
| Floor Type               | Concrete, underlay and carpet covering  |
| Ceiling Height           | 6.8 m   |
| Stage Construction       | Stage size is adjustable  |
| Partition                | 2 set (soundproof)  |
| VIP Room                 | 1 furnished room with shower and toilet   |
| Additional Meeting Rooms | Executive Boardroom, with natural lighting<br>Lotus Suite 13<br>Lotus Suite 14<br>Lotus Suite 15, with natural lighting |

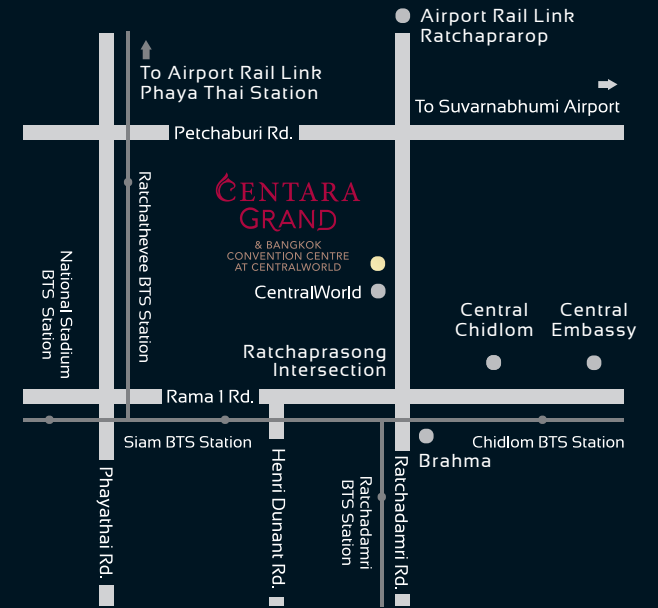


## GENERAL INFORMATION

|                      |  |
|----------------------|--|
| Public Access        | 8 passenger lifts, capacity @ 2,500 kg<br>3 passenger lifts, capacity @ 1,800 kg<br>2 escalators connecting the World Ballroom to the hotel lobby and CentralWorld shopping complex  |
| Service Access       | 2 cargo lifts, capacity @ 3,000 kg<br>Door size 2.35 x 2.30 m<br>Capacity size 2.40 x 6.00 m capacity height 2.5 m<br>1 car lift, capacity @ 2,500 kg<br>Door size 2.35 x 2.10 m<br>Capacity size 2.40 x 6.00 m capacity height 2.35 m |
| Audio Facilities     | Digital conference system<br>Potable and wireless microphones<br>24 channels mixing console  |
| Visual Facilities    | Fixed and motorized screens 6 x 9 m<br>Moveable screens 6 x 4 m<br>Video and data projectors   |
| SIS Facilities       | Available upon request   |
| Communication System | PA-LAN system<br>CCTV system<br>Telephone transferring system  |
| Internet Access      | Hi-speed internet (wired and wireless)   |
| Service Facilities   | Registration counters at 22 <sup>nd</sup> and ground floors<br>Secretariat Offices<br>Business Centre<br>Media Room<br>First Aid Room<br>Digital Signage / Praying Room  |
| Catering Services    | By Centara Grand at CentralWorld   |



# BANGKOK'S FIRST FULLY INTEGRATED HOTEL, CONVENTION VENUE AND LIFESTYLE LIVING MALL



## CENTRALWORLD

The Largest Lifestyle Shopping and Dining Destination in Bangkok

400 Fashion Brands & Flagship Stores / 300 F&B include Michelin-Star & Michelin-Guide

Discover your favourite local, high street and designer brands.

### Explore the Thai Way of Life in the Hug Thai Zone

Hug Thai brings together authentic Thai street food, organic fruits and vegetables, and local handicrafts for international tourists.

### Hug Crafts

A space showcasing eco-friendly products ranging from fashion and textiles to souvenirs and handmade silver pieces - all crafted from the heart.

### Experience Nightlife at Groove CentralWorld

Boasting more than 6,000 sqm of lively gastropubs and world-class lifestyle dining destinations, Groove CentralWorld is a must-visit hangout in the heart of Bangkok.

### Accessibility

Located in the centre of Bangkok's Ratchaprasong District, CentralWorld is easily reached by both Siam and Chidlom BTS stations.

CENTARA  
GRAND

& BANGKOK  
CONVENTION CENTRE  
AT CENTRALWORLD

CENTARA GRAND & BANGKOK CONVENTION CENTRE AT CENTRALWORLD

999/99 RAMA 1 ROAD, PATHUMWAN, BANGKOK 10330 THAILAND  
T +66 (0)2 100 1234 • F +66 (0)2 100 1235 • E CGCWSALES@CHR.CO.TH

WWW.CENTARAHOTELSRESORTS.COM

