

CENTARA GRAND HOTEL OSAKA





CENTARA GRAND

HOTEL OSAKA

-  2-11-50 Nambanaka, Naniwa-ku, Osaka City, 556-0011 Japan
-  centarahotelsresorts.com/cgoj
-  cgoj@chr.co.th
-  +81 6 6616 9945

CENTARA GRAND HOTEL OSAKA

Rising majestically above the vibrant district of Namba, Centara Grand Hotel Osaka marks the debut of Centara Hotels & Resorts in Japan with a striking 33-storey architectural landmark. Seamlessly blending Thai elegance with Japanese refinement, the hotel offers a sophisticated urban retreat featuring world-class dining, luxurious accommodations, and panoramic rooftop views—introducing a gracious and distinctive approach to hospitality in the heart of Osaka.

ACCOMMODATION

- 515 guestrooms, comprising king, twin beds and connecting rooms are available
- Guest rooms range between 27 and 56 square metres
- King, twin beds and connecting rooms are available
- The club rooms and suites are across the 26th - 31st floors

FACILITIES & SERVICES

- Co-working space
- Club lounge
- Fitness centre
- SPA Cenvaree featuring four treatment rooms, including dedicated Thai massage rooms as well as foot massage area
- Car parking facilities
- Taxi entrance

RESTAURANTS & BARS

- **Smoke & Spin:** lounge serving afternoon tea, wine and cocktails
- **International Brasserie KUNSEI:** innovative French with seasonal Japanese ingredients celebrating smoked delicacies
- **Crudo Deck:** fully open-air rooftop restaurant
- **WhiskeyNova:** modern steak house with dry-aged meat and whiskey
- **Automata:** futuristic bar with self-style cocktails
- **Embassy of Crab:** crab, shrimp, and seasonal seafood
- **Suan Bua:** an authentic Thai restaurant
- **Platform 2:** coffee, tea, bakeries and sweets

ACCOMMODATION

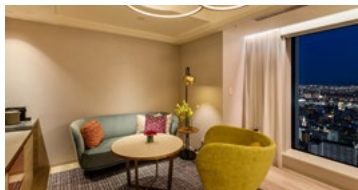
ROOM FACTS AT A GLANCE						IN-ROOM FEATURES								
FLOOR	ROOM TYPE		ROOM SIZE			Maximum occupancy (AD + CH)	Separate shower	Bathtub	Individually controlled air-conditioning	Nespresso coffee maker	In-room safe	Satellite TV	Complimentary wireless internet access	Access to Club Lounge
			Number of rooms	Room size (m ²)	Total living space (m ²)									
Yu Standard Floor	Deluxe	King	90	27-30	27-30	3AD or 3AD + 1CH	•	•	•	•	•	•	•	
		Twin	90	27-30	27-30	3AD or 3AD + 1CH	•	•	•	•	•	•	•	
	Corner	King	10	40	40	2AD or 2AD + 1CH	•	•	•	•	•	•	•	
	Family	King + Bunk beds	10	40	40	2AD or 2AD + 2CH	•	•	•	•	•	•	•	
Rei Premium Floor	Deluxe	King	87	27-30	27-30	3AD or 3AD + 1CH	•	•	•	•	•	•	•	
		Twin	90	27-30	27-30	3AD or 3AD + 1CH	•	•	•	•	•	•	•	
	Corner	King	10	40	40	2AD or 2AD + 1CH	•	•	•	•	•	•	•	
	Family	King + bunk beds	10	40	40	2AD or 2AD + 2CH	•	•	•	•	•	•	•	
Miyabi Club Floor	Deluxe	King	50	27-30	27-30	3AD or 3AD + 1CH	•	•	•	•	•	•	•	
		Twin	54	27-30	27-30	3AD or 3AD + 1CH	•	•	•	•	•	•	•	
	Corner	King	6	40	40	2AD or 2AD + 1CH	•	•	•	•	•	•	•	
	Family	King + Bunk beds	6	40	40	2AD or 2AD + 2CH	•	•	•	•	•	•	•	
	Suite	King	2	56	56	2AD or 2AD + 1CH	•	•	•	•	•	•	•	

RESTAURANTS & BARS

VENUE	TYPE OF CUISINE	CAPACITY (SEATS)	OPENING HOURS	LOCATION
Smoke & Spin	Lounge serving afternoon tea, wine and cocktails	39	11:00 - 24:00	33 rd floor
International Brasserie KUNSEI	Innovative French with seasonal Japanese ingredients celebrating smoked delicacies	52	11:30 - 14:30 (Fri, Sat, Sun, Holiday) 17:30 - 22:30	33 rd floor
Crudo Deck	Western bistro rooftop restaurant	56	17:30 - 24:00	33 rd floor
WhiskeyNova	Modern Steak House with dry-aged meat and whiskey	64	11:30 - 14:30 17:30 - 22:30	32 nd floor
Automata	Futuristic bar with self-style cocktails	30	11:30 - 14:30 17:30 - 22:30	32 nd floor
Embassy of Crab	Crab, shrimp, and seasonal seafood	110	11:30 - 14:30 17:30 - 22:00	2 nd floor
Suan Bua Thai	Authentic Thai cuisine	96	06:30 - 10:30 11:30 - 14:30 17:30 - 22:00	2 nd floor
Platform 2	Coffee, tea, bakeries and sweets	30	08:00 - 20:00	2 nd floor

MEETINGS & EVENTS

VENUE	LOCATION	AREA (M ²)	SIZE (M X M)	CEILING (M)	CLASSROOM	THEATRE	BANQUET	COCKTAIL
Lotus Room 1+2	33 rd floor	98	14.9 x 6.5	3.5	48	72	40	40
Lotus Room 1	33 rd floor	40	7.3 x 6.5	3.5	-	-	20	-
Lotus Room 2	33 rd floor	58	7.6 x 6.5	3.5	-	-	20	-
Orchid Ballroom 1+2	5 th floor	351	16.5 x 21.2	5	216	322	180	220
Orchid Ballroom 1	5 th floor	175	16.5 x 10	5	108	140	80	100
Orchid Ballroom 2	5 th floor	175	16.5 x 10	5	84	115	80	100
Jasmine Meeting Room 1	3 rd floor	26	5.3 x 4.2	3	-	-	8	-
Jasmine Meeting Room 2	3 rd floor	54	5.1 x 10.2	3	-	-	12	-





**CENTARA
GRAND**
HOTEL OSAKA